



**S4i Express**, the ultimate document management product for IBM iSeries/system i, facilitates report distribution, on-line viewing, archiving, retrieval, document scanning, desktop archiving, and much more.

**S4i Express is the most powerful and complete document management solution in the industry** and doesn't need support from several other modules or servers to function. It provides flexible control but yet a central repository for the document management process enterprise-wide, with minimal effort, and integrates with virtually all i5 – iSeries software applications.

**Capture**

Capture PC documents, image files, spool files and reports from one or more print queues/systems, the IFS, PC or other systems.

**Burst**

**S4i Express** uses simple, on-screen point-and-select user defined rules to burst system i reports into segments by page, line or field. The instructions that define where reports are split can be easily modified.

**Bundle**

**S4i Express** automates the process of creating document bundles from report segments. These bundles can be comprised of complete reports or segments.

**Archive**

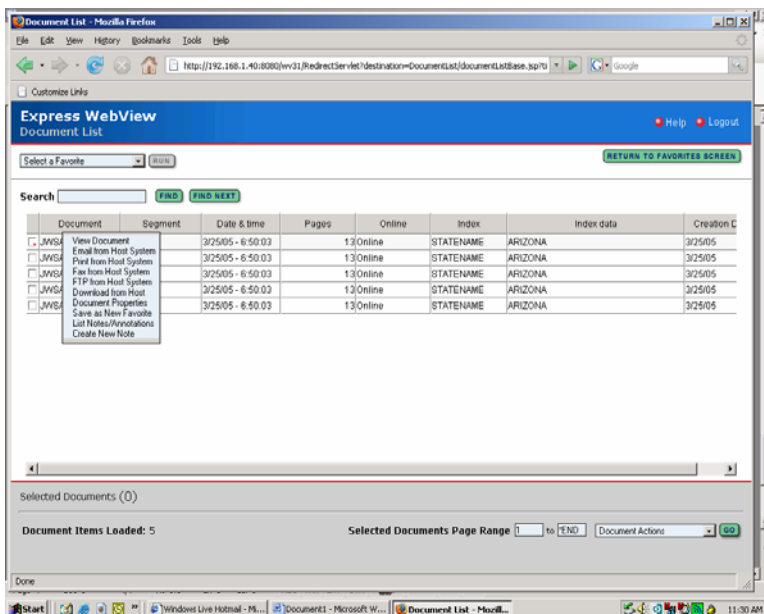
Unlimited segment links, indexes, and search criteria simplify the process of document archival and retrieval, and make it easy to track document use and availability.

**Document Scanning & Workflow**

Organizations that are paper driven can easily scan documents, recognize, index (using OMR, OCR, or ICR), and enter them with their document data into this managed workflow environment.

**Report Distribution**

**S4i Express** automates the electronic delivery of information that is specific to the recipient's mission.



**Templates and Signatures:**

Include multiple image overlays for forms, signatures, logos, etc. to give documents a preprinted, professional look.

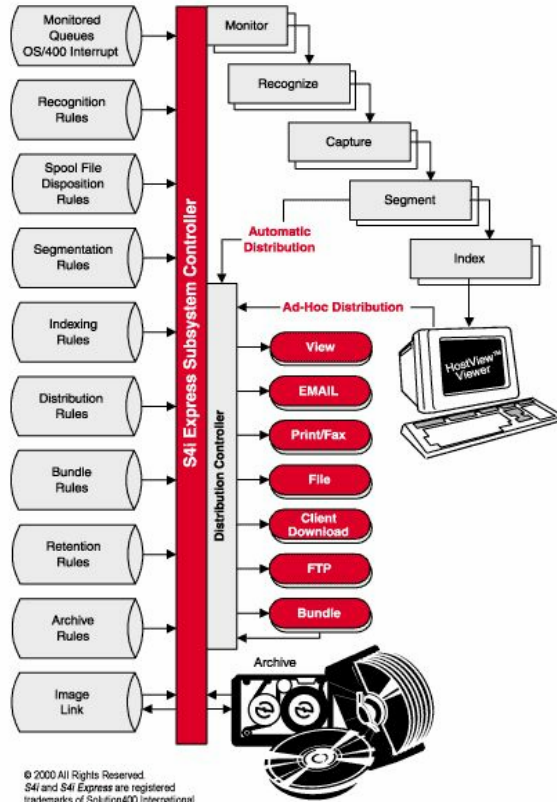
**Document Formats:** These documents can be transmitted in a variety of formats including PDF, HTML, CSV (Excel), RTF, generic WP (Word), ASCII, EBCDIC, TXT, AFPDS, and postscript.

**Document Retrieval and Viewing:** Fast web-based document retrieval reduces printer use and permits instant access to reports from any desktop with Microsoft Internet Explorer or Firefox. The end user interface can be customized to facilitate easy navigation and to reflect the image of the organization.

**Intelligent Distribution:** Distribution rules and database-linkable user-profiles make it easy to change distribution characteristics. Documents can be transmitted via email, print, FTP, fax, etc.

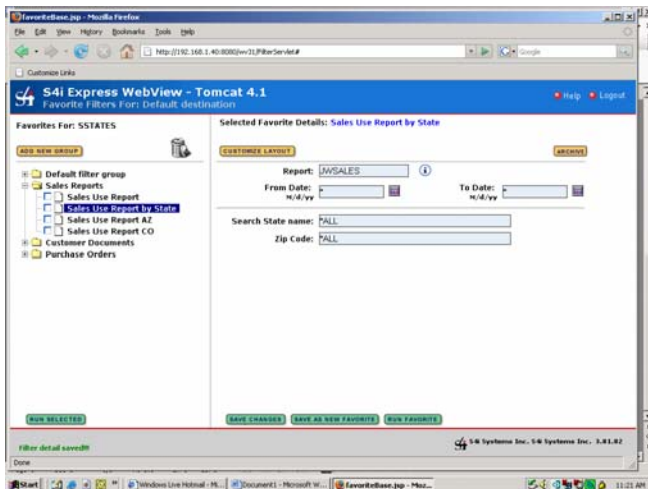


## S4i Express Overview



© 2000 All Rights Reserved.  
 S4i and S4i Express are registered trademarks of Solution400 International. This document may not be copied or reproduced in any manner without the express, written consent of S4i.

### WebView: Browser based interface.



#### Monitor Task:

The *S4i Express* Monitor does not run continuously, saving system overhead. Instead, it is awakened by an interrupt from OS/400, at which time it passes a message to the...

#### Recognize Task:

Spool files may be recognized "externally" by 18 external attributes, or "internally" by position, content, or a combination of both external and internal recognition. If it is not a recognized file, the system "hibernates". If it is a recognized file, control is passed to the...

#### Capture Task:

The captured data is then placed into the *S4i Express* "repository". "Disposition Rules" determine what happens to the original file as it is no longer needed by *S4i Express*. Control is passed to the...

#### Segment Task:

If the file is to be segmented, an index is built for the file, and it is passed to the Distribution Controller. If cross-document indexing is required, the file is passed to the...

#### Index Task (S4i HostView):

Indexes created here will be applied when this document is viewed online, and also facilitate automatic linking of documents to allow multiple related documents to be open simultaneously (with hot-key toggle). The indexed file is then passed to the...

#### Distribution Controller:

Using Distribution and Bundling Rules, the document is prepared for online viewing and distribution to local and remote printers, PC workstations, e-mail, FTP/ website, fax, IFS folders, other iSeries/i5s, NT, Novell, etc.

#### Bundling

Bundling of multiple documents, or segments of one or more documents optionally adds a cover page with table of contents and separator pages between the segments. Bundle rules optionally allow a bundle to be held for *n* period of time, or until all components in the bundle arrive and are ready for distribution. The Distribution Controller manages final disposition of the bundle.

#### Output Formats

*S4i Express* distributes documents in a wide variety of formats, including PDF (with electronic form/image overlays), RTF, CSV (Excel) HTML, Generic WP (Word), ASCII, EBCDIC, TXT, and Postscript.

#### Archiving

*S4i Express* archives files to disk, tape, and COLD Storage, with rapid online retrieval capabilities, including BRMS support.

#### Scanning & Workflow

*S4i Express* has built-in accessibility for document imaging (scanning) and workflow, providing "COLD" electronic report management for those systems. Integrated solutions for CRM, ERP, SCM and other systems are also available.

#### Retrieval

*S4i WebView* allows one or multiple documents to be viewed via an iSeries/i5 or network user via a browser. One or multiple documents can also be redistributed through email, print, FTP, fax, etc.

Expert 24/7 Technical support.



S4i Systems, Inc.  
 4755 Oceanside Blvd  
 Suite 130  
 Oceanside, CA 92056

(800) 231-5280  
 (760) 631-5280  
 (760) 631-5285-fax  
 44(0) 192-576-4248-UK